

SWITZERLAND

Phone: +41 (0) 43 931 61 68
AFTN: LSSAYOYX
Email: aip@skyguide.ch

skyguide

AIP SUP: 003/2024

Effective Date: 13-JUN-2024

End Date: 22-DEC-2025

Publication Date: 13-JUN-2024

AIP Services
P.O. Box
CH-8602 Wangen bei Dübendorf
Switzerland

Zurich Airport (LSZH) - Project "Reconstruction Apron South - Phase B1 - INNER"

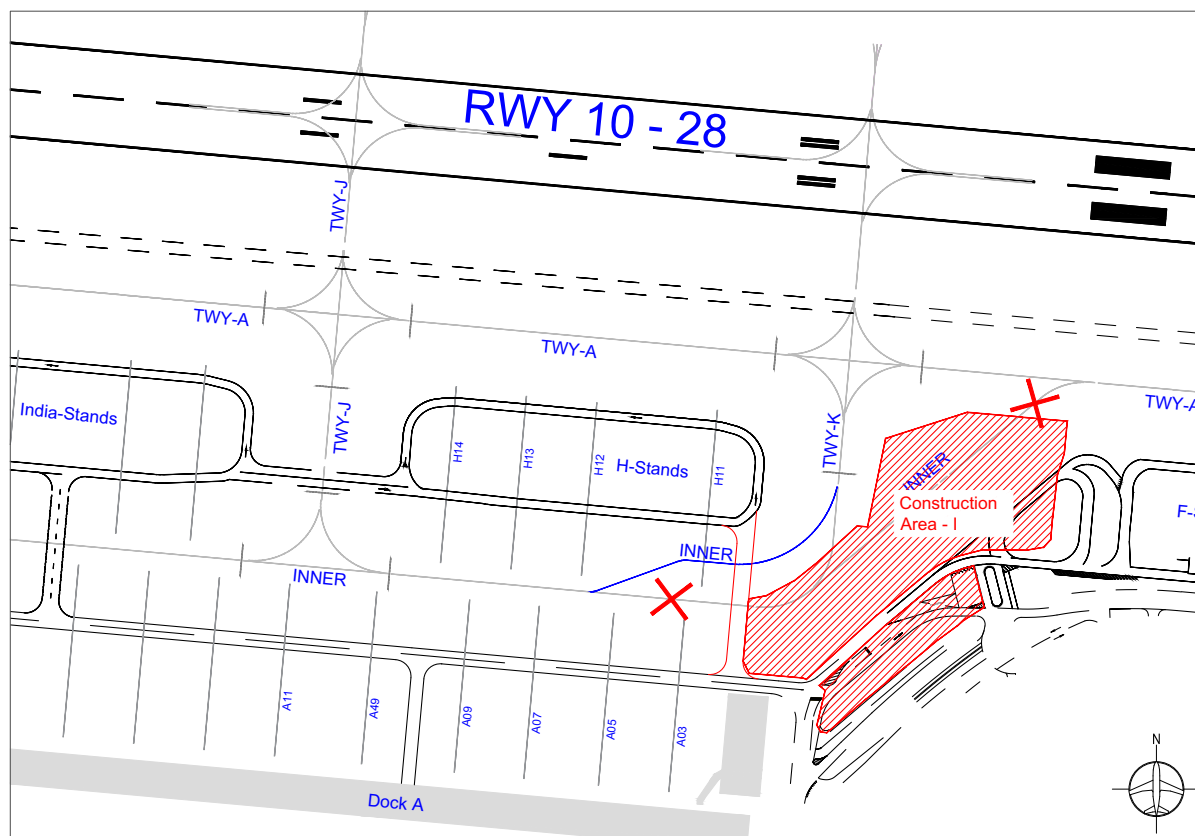
Construction Work aprx. 09 July 2024 to 21 November 2025

Phase I

(Start aprx. 09 Jul 2024 end of phase I aprx. 25 Oct 2024 - will be published by NOTAM)

- TWY INNER BTN TWY ALPHA AND TWY KILO CLSD DUE TO WIP TWY.
- TWY INNER BTN TWY JULIETT AND TWY KILO RESTRICTED TO CODE C ACFT. USE MIN POWER ONLY.
- TAX ON TEMP MARKED CL. NO CL LGT PROVIDED. TAX WITH CTN.

Overview phase I

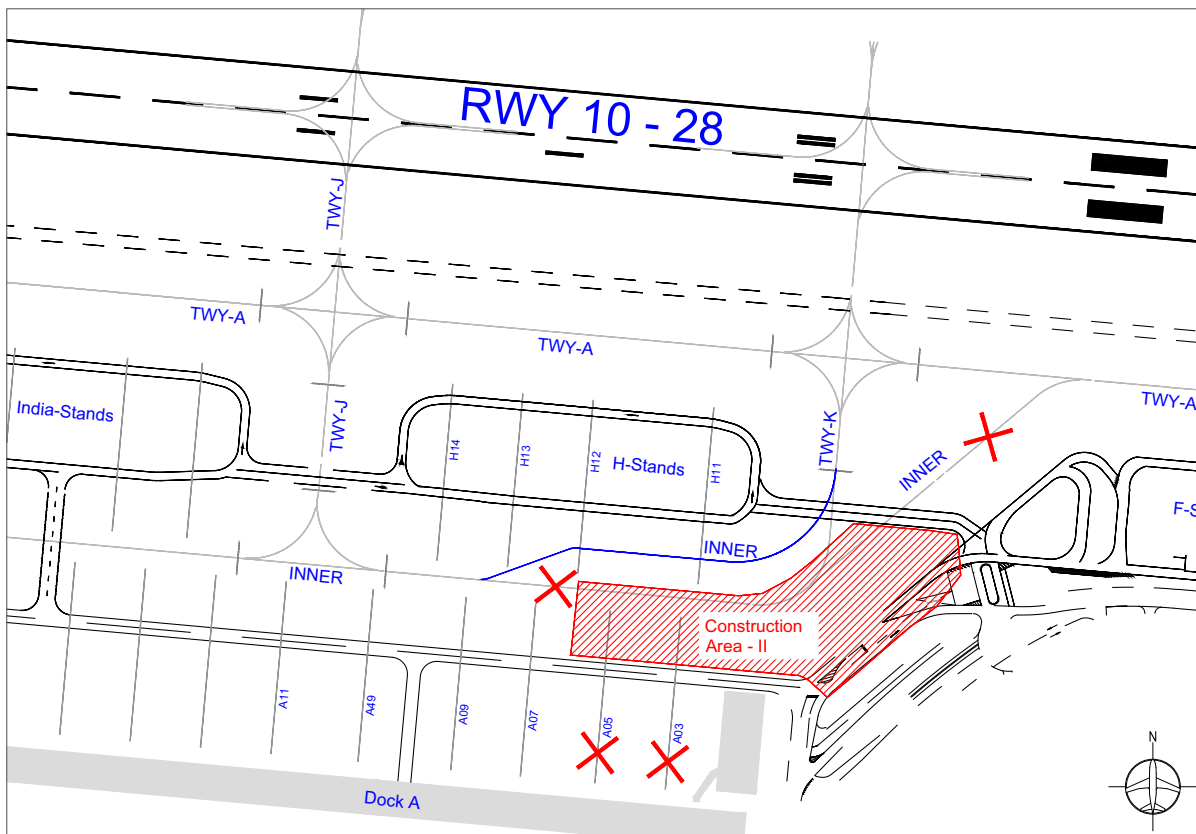


Phase II

(Start aprx. 26 Oct 2024 end of phase I aprx. 31 Jan 2025 - will be published by NOTAM)

- TWY INNER BTN TWY ALPHA AND TWY KILO CLSD DUE TO WIP TWY.
- TWY INNER BTN TWY JULIETT AND TWY KILO RESTRICTED TO CODE C ACFT. USE MIN POWER ONLY.
- TAX ON TEMP MARKED CL. NO CL LGT PROVIDED. TAX WITH CTN.
- STANDS A03 AND A05 CLSD.

Overview phase II

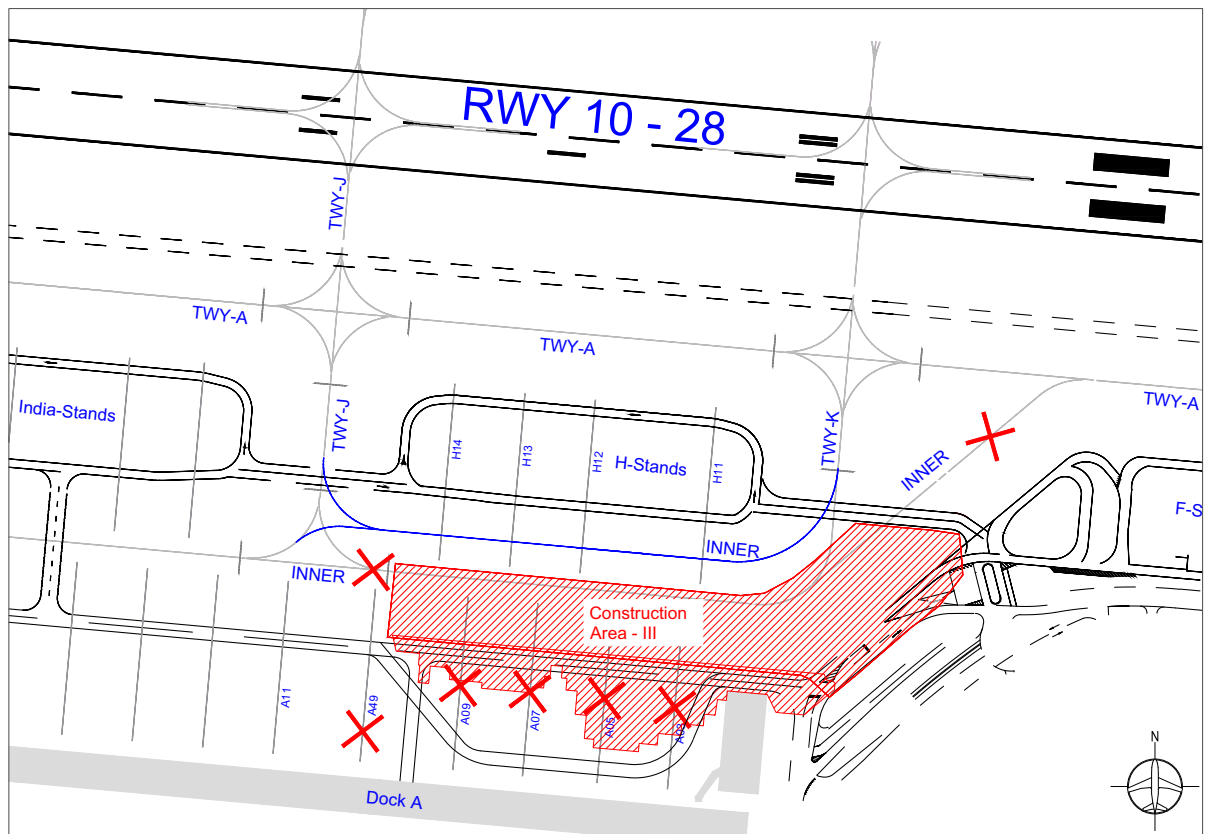


Phase III

(Start aprx. 01 Feb 2025 end of phase I aprx. 21 Nov 2025 - will be published by NOTAM)

- TWY INNER BTN TWY ALPHA AND TWY KILO CLSD DUE TO WIP TWY.
- TWY INNER BTN TWY JULIETT AND TWY KILO RESTRICTED TO CODE C ACFT. USE MIN POWER ONLY.
- TAX ON TEMP MARKED CL. NO CL LGT PROVIDED. TAX WITH CTN.
- STANDS A03, A05, A07, A09 AND A49 CLSD.

Overview phase III



THIS PAGE INTENTIONALLY LEFT BLANK